

DANRE tcf21 Antibody (N-term)
Affinity Purified Rabbit Polyclonal Antibody (Pab)
Catalog # Azb10030a

Specification

DANRE tcf21 Antibody (N-term) - Product Information

Application	WB,E
Primary Accession	Q32PV5
Reactivity	Zebrafish
Host	Rabbit
Clonality	Polyclonal
Isotype	Rabbit IgG
Calculated MW	19346
Antigen Region	5-35

DANRE tcf21 Antibody (N-term) - Additional Information

Gene ID 558148

Other Names

Transcription factor 21 {ECO:0000312|EMBL:AAI079691}, TCF-21, Capsulin
{ECO:0000312|EMBL:ABU954061}, Epicardin, MyoRa2, TCF21

Target/Specificity

This DANRE tcf21 antibody is generated from rabbits immunized with a KLH conjugated synthetic peptide between 5-35 amino acids from the N-terminal region of DANRE tcf21.

Dilution

WB~~1:1000

E~~Use at an assay dependent concentration.

Format

Purified polyclonal antibody supplied in PBS with 0.09% (W/V) sodium azide. This antibody is purified through a protein A column, followed by peptide affinity purification.

Storage

Maintain refrigerated at 2-8°C for up to 2 weeks. For long term storage store at -20°C in small aliquots to prevent freeze-thaw cycles.

Precautions

DANRE tcf21 Antibody (N-term) is for research use only and not for use in diagnostic or therapeutic procedures.

DANRE tcf21 Antibody (N-term) - Protein Information

Name TCF21

Function Involved in epithelial-mesenchymal interactions in kidney and lung morphogenesis that

include epithelial differentiation and branching morphogenesis.

Cellular Location

Nucleus {ECO:0000250|UniProtKB:O43680, ECO:0000255|PROSITE-ProRule:PRU00981}

Tissue Location

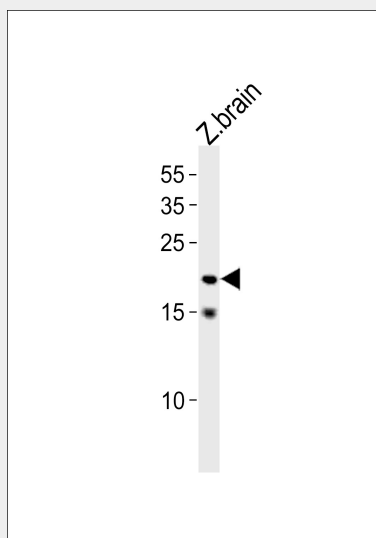
Expressed in the cranial paraxial mesoderm from 20 hpf and subsequently becomes restricted to the pharyngeal mesoderm that will form the muscle. Expression in the proepicardial organ is first seen at 40hpf in a cluster of cells between the myocardium and yolk. Also expressed in the developing arches. Expression begins to surround the heart by day 3 of development, and by 96 hpf, expression is restricted to the outer epicardial layer surrounding the myocardium.

DANRE tcf21 Antibody (N-term) - Protocols

Provided below are standard protocols that you may find useful for product applications.

- [Western Blot](#)
- [Blocking Peptides](#)
- [Dot Blot](#)
- [Immunohistochemistry](#)
- [Immunofluorescence](#)
- [Immunoprecipitation](#)
- [Flow Cytometry](#)
- [Cell Culture](#)

DANRE tcf21 Antibody (N-term) - Images



DANRE tcf21 Antibody (N-term) (Cat. #Azb10030a) western blot analysis in zebra fish brain tissue lysates (35ug/lane). This demonstrates the DANRE tcf21 antibody detected the DANRE tcf21 protein (arrow).

DANRE tcf21 Antibody (N-term) - Background

Involved in epithelial-mesenchymal interactions in kidney and lung morphogenesis that include epithelial differentiation and branching morphogenesis (By similarity).

DANRE tcf21 Antibody (N-term) - References

Wang Y., et al. J. Mol. Evol. 68:629-640(2009).

Chang M.-Y., et al. Submitted (MAY-2007) to the EMBL/GenBank/DDBJ databases.

Serluca F.C., et al. Dev. Biol. 315:18-27(2008).

Knight R.D., et al. J. Exp. Zool. B Mol. Dev. Evol. 310:355-369(2008).